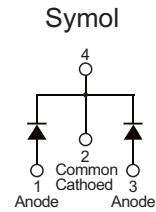


■ PRODUCT CHARACTERISTICS

$V_R(@I_c=0.5mA)$	150V
$V_F(Typ@I_F=10A)$	0.83V
$I_R(@V_R=150V)$	20 μ A
I_D	20A

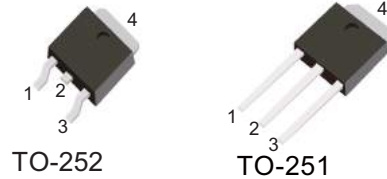


■ APPLICATION

- * Case epoxy molded
- * Leds are readily solderable

■ FEATURES

- * Guard ring for stress protection
- * Low forward voltage
- * Low power loss high efficiency
- * High surge capacity
- * Pb free packages are available



■ ORDER INFORMATION

Order codes		Package	Packing
Halogen-Free	Halogen		
N/A	MOT20150UC	TO-251	70pieces/Tube
N/A	MOT20150UD	TO-252	2500pieces/Reel

■ MAXIMUM RATINGS(Each diode leg)

Parameter	Symbol	Value	Unit
Peak repetitive reverse voltage	V_{RRM}	150	V
Average rectified output current	Total	20	A
	Per leg	10	A
Non-repetitive peak forward surge current 8.3ms single half sine-wave superimposed on reate load	I_{FSM}	200	A
Operating and storage temperature range	T_J, T_{STG}	-55 to +175	$^{\circ}$ C

■ ELECTRICAL CHARACTERISTICS

Parameter	Symbol	Test conditions	Min	Typ	Max	Unit
Peak repetitive reverse voltage	B_V	$I_c=0.5mA T_J=25^{\circ}C$	150	-	-	V
Forward voltage drop	V_F	$I_F=10A T_J=25^{\circ}C$	-	0.83	0.86	V
Leakage current	I_r	$V_R=150V T_J=25^{\circ}C$	-	-	0.02	mA
		$V_R=150V T_J=125^{\circ}C$	-	-	6	mA

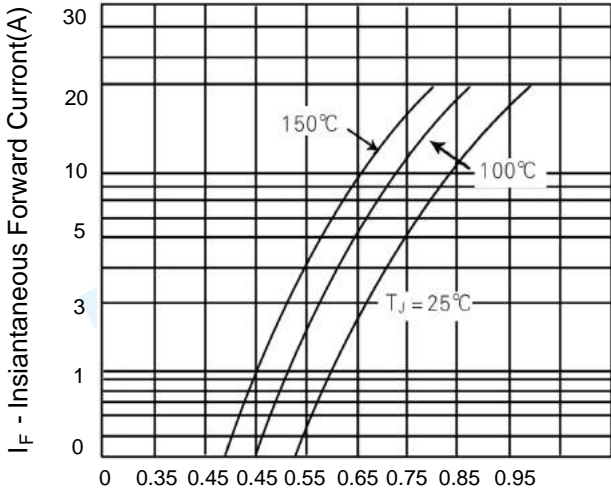


Figure 1. Typical Forward Voltage Per Diode

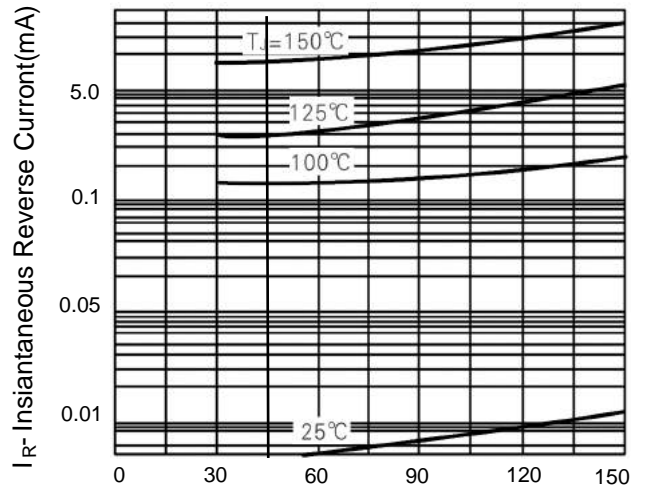


Figure 2. Typical Reverse Current Per Diode

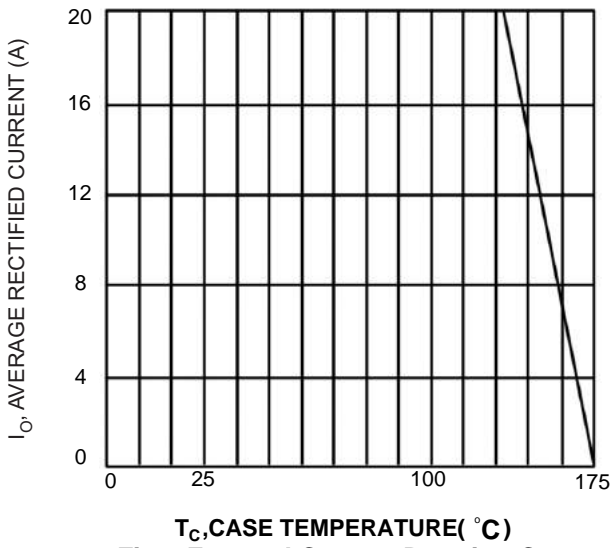


Fig.3 Forward Current Derating Curve

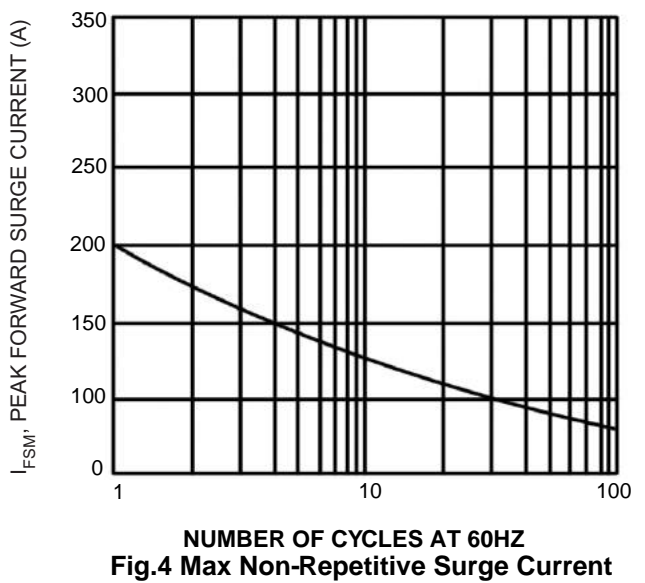
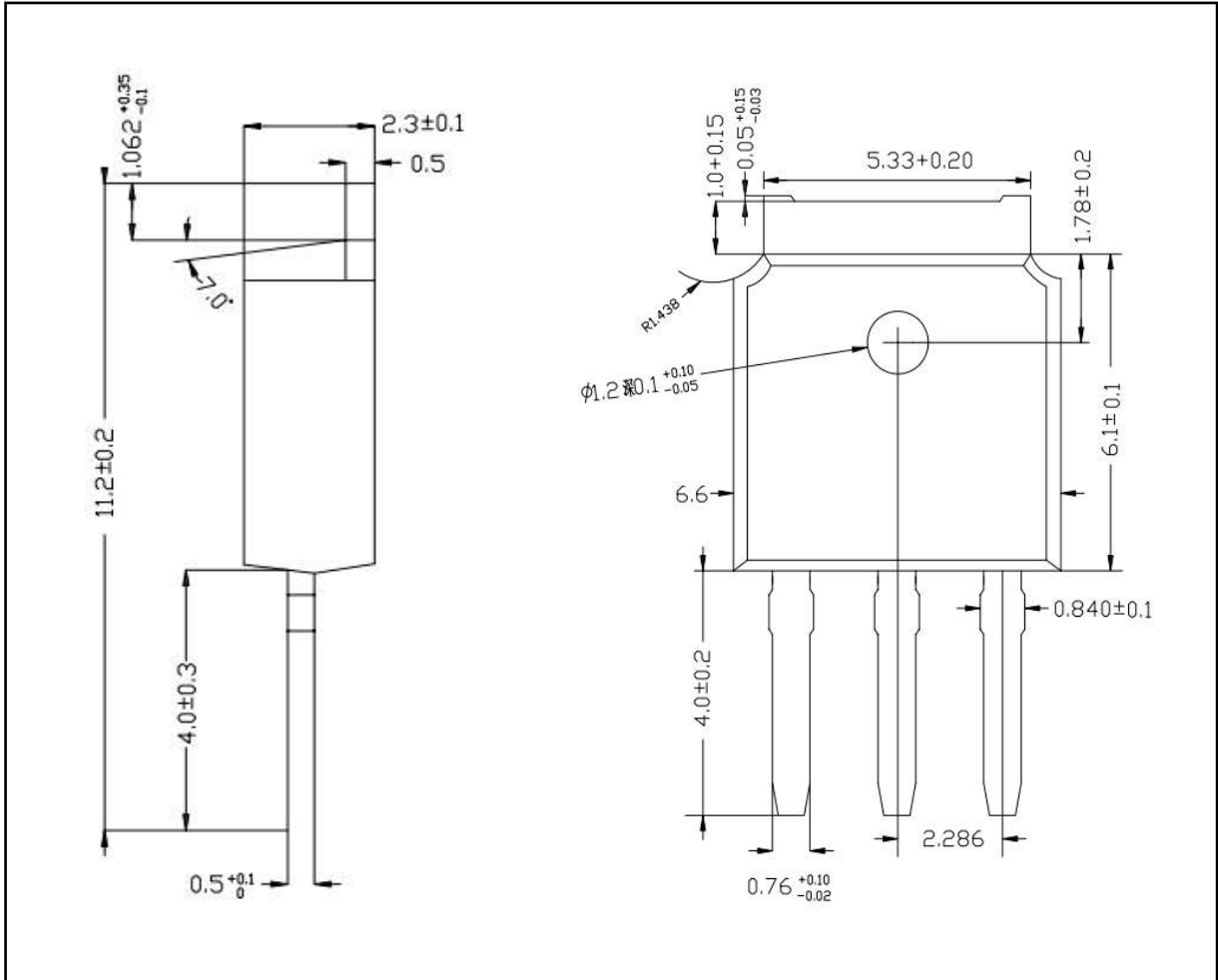


Fig.4 Max Non-Repetitive Surge Current

■ TO-251-3L PACKAGE OUTLINE DIMENSIONS



■ TO-252-2L PACKAGE OUTLINE DIMENSIONS

