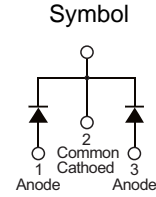


■ PRODUCT CHARACTERISTICS

VR(@IC=0.5mA)	200V
VF(Typ@IF=8/A)	0.93V
IR(@VR=200V)	10uA
ID	16A
TRR	35nS

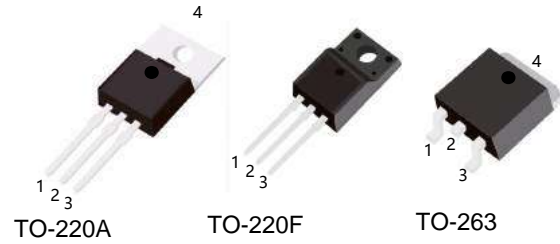


■ MECHANICAL CHARACTERISTICS

- \* Case: epoxy,molded
- \* Finish:all external surfaces corrosion resistant and terminal
- \* Leads are readily solderable
- \* Leads temperature for soldering purposes:  
260°C Max for 10 seconds

■ FEATURES

- \* Guard ring for stress protection
- \* Low forward voltage
- \* Low power loss/high efficiency
- \* High surge capacity
- \* Low stored charge majority carrier conduction
- \* Pb free package are available



■ ORDER INFORMATION

Order codes		Package	Packing
Halogen-free	Halogen		
N/A	MUR1620A	TO-220	50pieces/Tube
N/A	MUR1620F	TO-220F	50pieces/Tube
N/A	MUR1620E	TO-263	800pieces/Reel

■ MAXIMUM RATINGS (Each diode leg)

Parameter	Symbol	Value	Unit
Peak repetitive reverse voltage	$V_{RRM}$	200	V
Average rectified output current	Total	16	A
	Per leg	8	A
Non-repetitive peak forward surge current 8.3ms single half sine-wave superimposed on reate load	$I_{FSM}$	150	A
Operating and storage temperature range	$T_J, T_{STG}$	-55 to + 175	°C

■ ELECTRICAL CHARACTERISTICS

Parameter	Symbol	Conditions	Min	Typ	Max	Unit
Peak repetitive reverse voltage	$B_V$	$I_C=0.5mA, T_J=25^{\circ}C$	200	-	-	V
Forward voltage drop	$V_F$	$I_F=8A, T_J=25^{\circ}C$	-	0.93	1.1	V
Leakage current	$I_R$	$V_R=200V, T_J=25^{\circ}C$	-	-	0.01	mA
		$V_R=200V, T_J=125^{\circ}C$	-	-	6	
Fast recovery diode reverse recovery time	$T_{RR}$	Recovery time $I_F=1A, dI_F/dt=200A/\mu s$	-	-	35	nS

■ TYPICAL CHARACTERISTICS

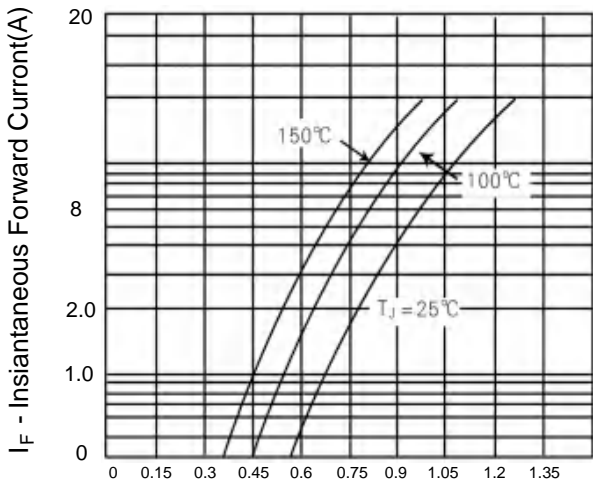


Figure 1. Typical Forward Voltage Per Diode

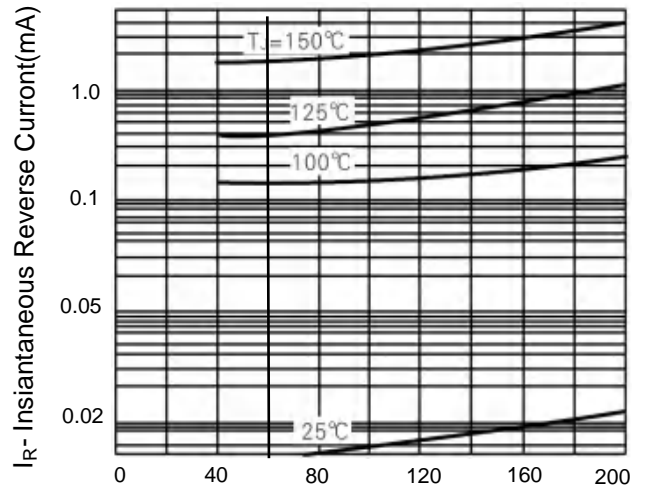


Figure 2. Typical Reverse Current Per Diode

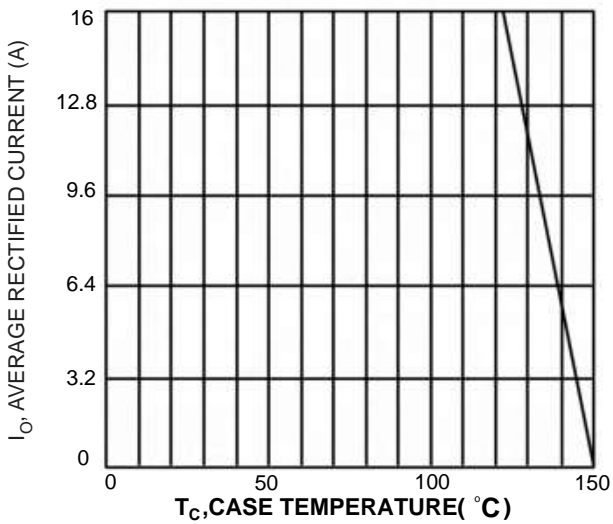


FIGURE.3 Forward Current Derating Curve

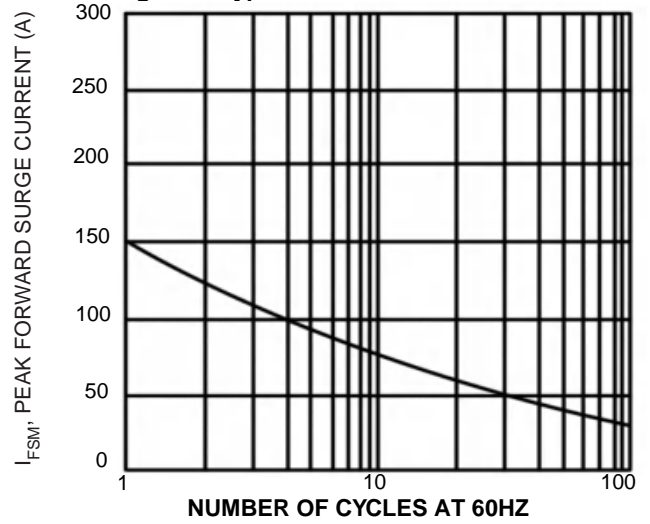


FIGURE.4 Max Non-Repetitive Surge Current

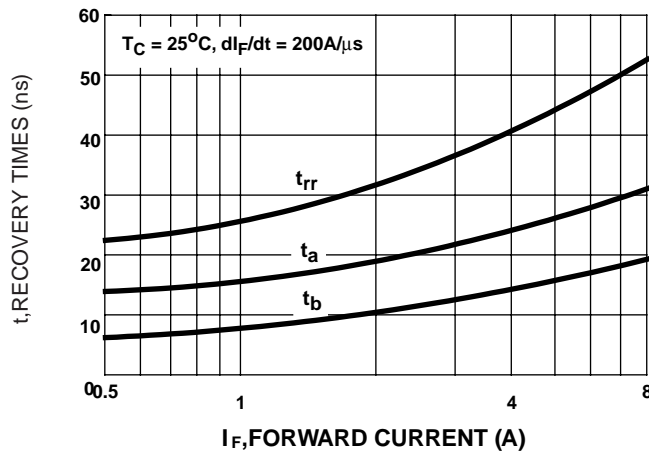
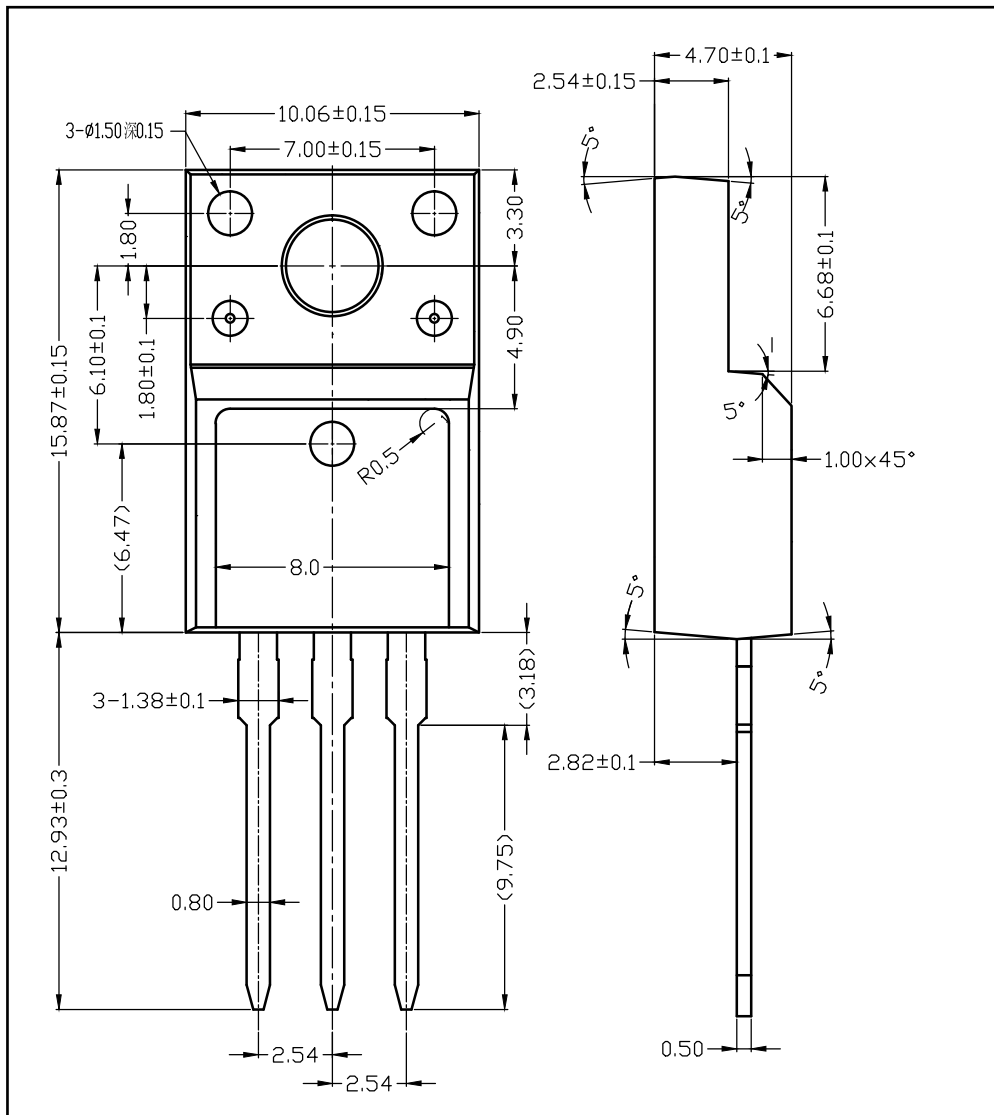


FIGURE.5  $t_{rr}$ ,  $t_a$  AND  $t_b$  CURVES vs FORWARD CURRENT

■ TO-220F PACKAGE OUTLINE DIMENSIONS



■ TO-220 PACKAGE OUTLINE DIMENSIONS

